



GMT MONTHLY MEMBERSHIP PROGRESS REPORT

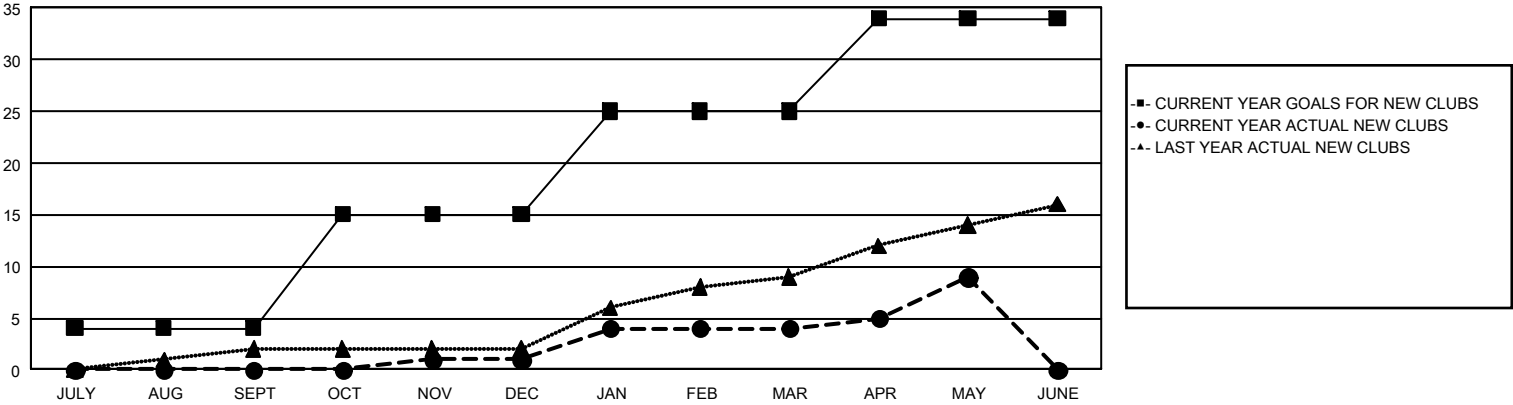
GAT Constitutional Area 2

Results as of: 5/31/2025

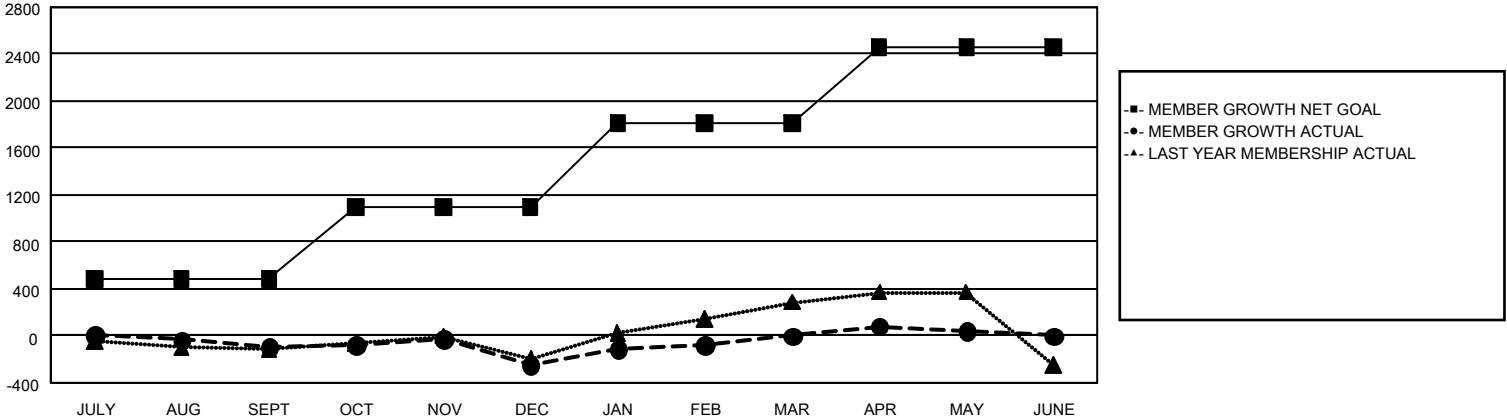
REPORT DOES NOT INCLUDE CLUBS IN UNDISTRICTED AREAS.

Clubs				Members			
RESULTS FOR 2024-2025				RESULTS FOR 2024-2025			
QUARTER	NEW CLUB GOAL	NEW CLUBS	DROPPED CLUBS	QUARTER	MEMBER GROWTH NET GOAL	MEMBER GROWTH ACTUAL	DROPPED MEMBERS ACTUAL (including transfers)
JULY/AUG/SEPT	4	0	2	JULY/AUG/SEPT	483	586	586
OCT/NOV/DEC	11	1	8	OCT/NOV/DEC	609	880	910
JAN/FEB/MAR	10	3	3	JAN/FEB/MAR	718	976	616
APR/MAY/JUNE	9	5	3	APR/MAY/JUNE	647	656	563

GOALS AND ACTUAL NEW CLUBS CUMULATIVE



GOALS AND ACTUAL MEMBERS CUMULATIVE



DROPPED CLUBS: 16		724 CLUBS OF 1,178 ADDED 1 OR MORE NEW MEMBERS	<u>GENDER DISTRIBUTION</u>	
			MALE	16,295 (62.47%)
			FEMALE	9,772 (37.47%)
<u>DROPPED MEMBERS</u>		CLICK HERE FOR CUMULATIVE MEMBERSHIP DATA		
DECEASED	347		TOTAL FAMILY UNIT MEMBERS 4,691	
CLUB CANCELLED	101			
OTHER	2,204		FAMILY MEMBERS PAYING HALF DUES 2,410	
TOTAL	2,652			